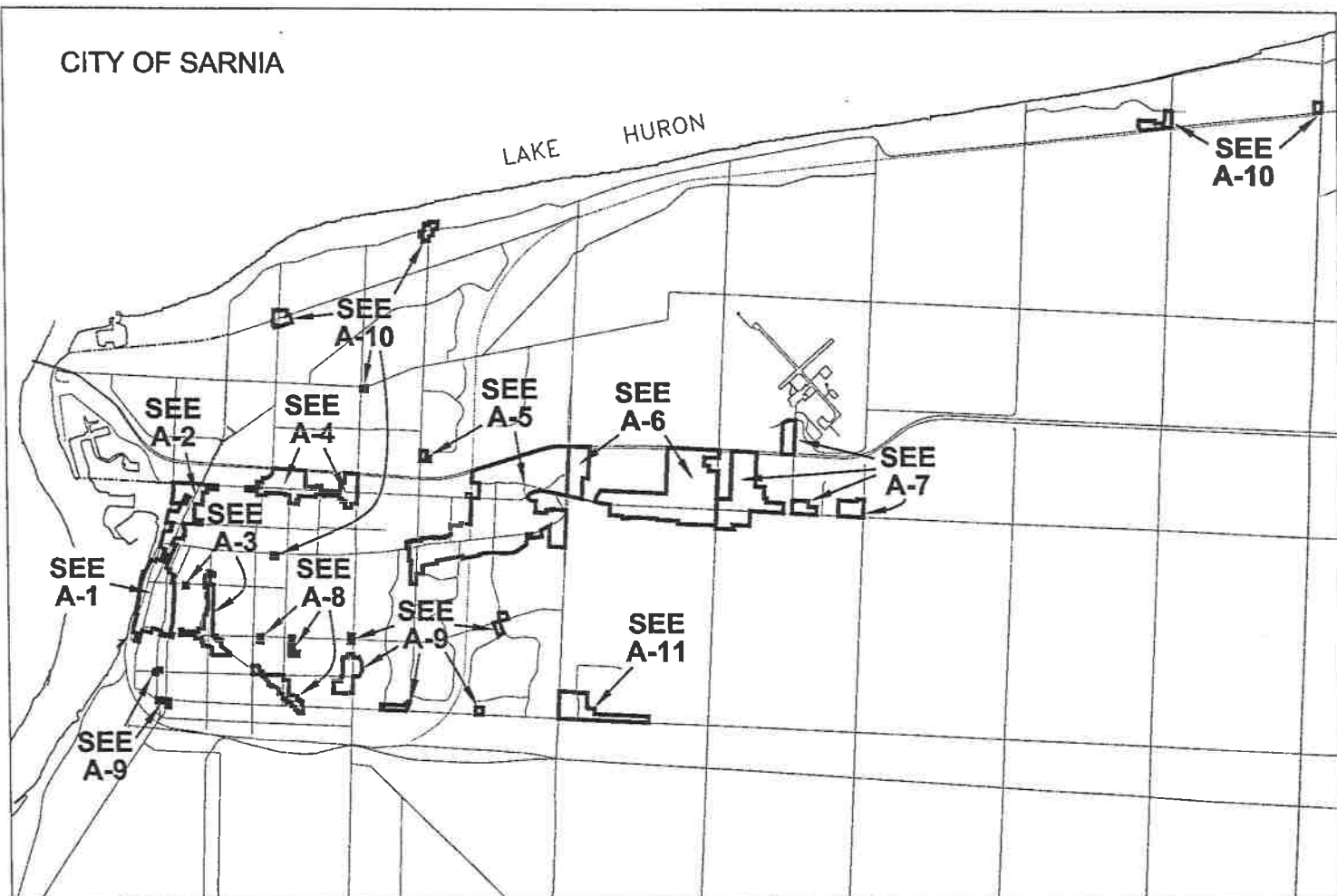


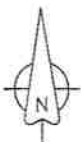
SCHEDULE "A-INDEX"



 LIMIT OF COMMERCIAL AREA

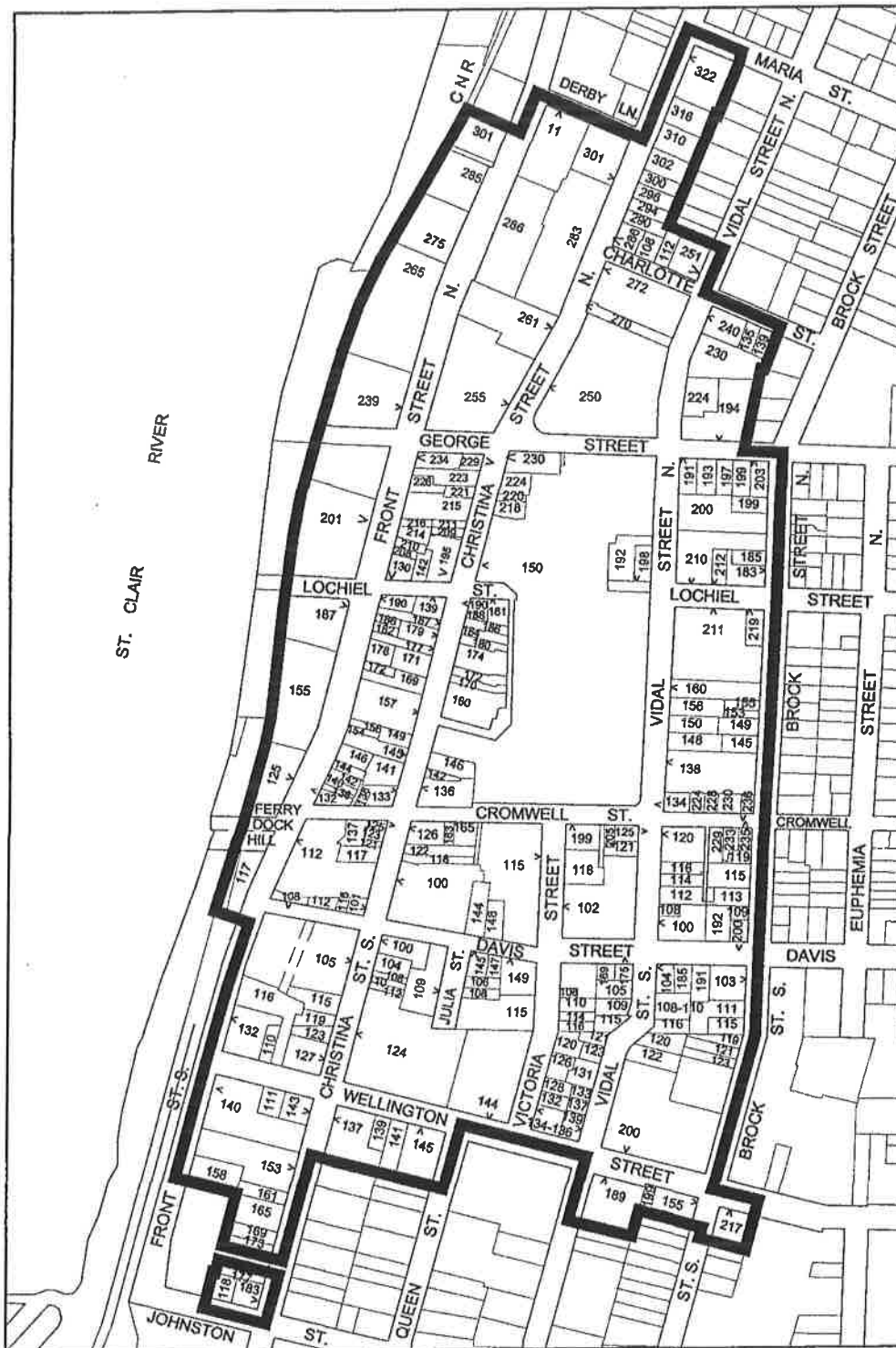
PREPARED BY: CITY OF SARNIA PLANNING & BUILDING DEPARTMENT
DATED JANUARY 19, 2006.

SOURCE: ASSESSMENT MAPS
UPDATED FROM 2004 ASSESSMENT RECORDS.



NOT TO SCALE

SCHEDULE "A-1"



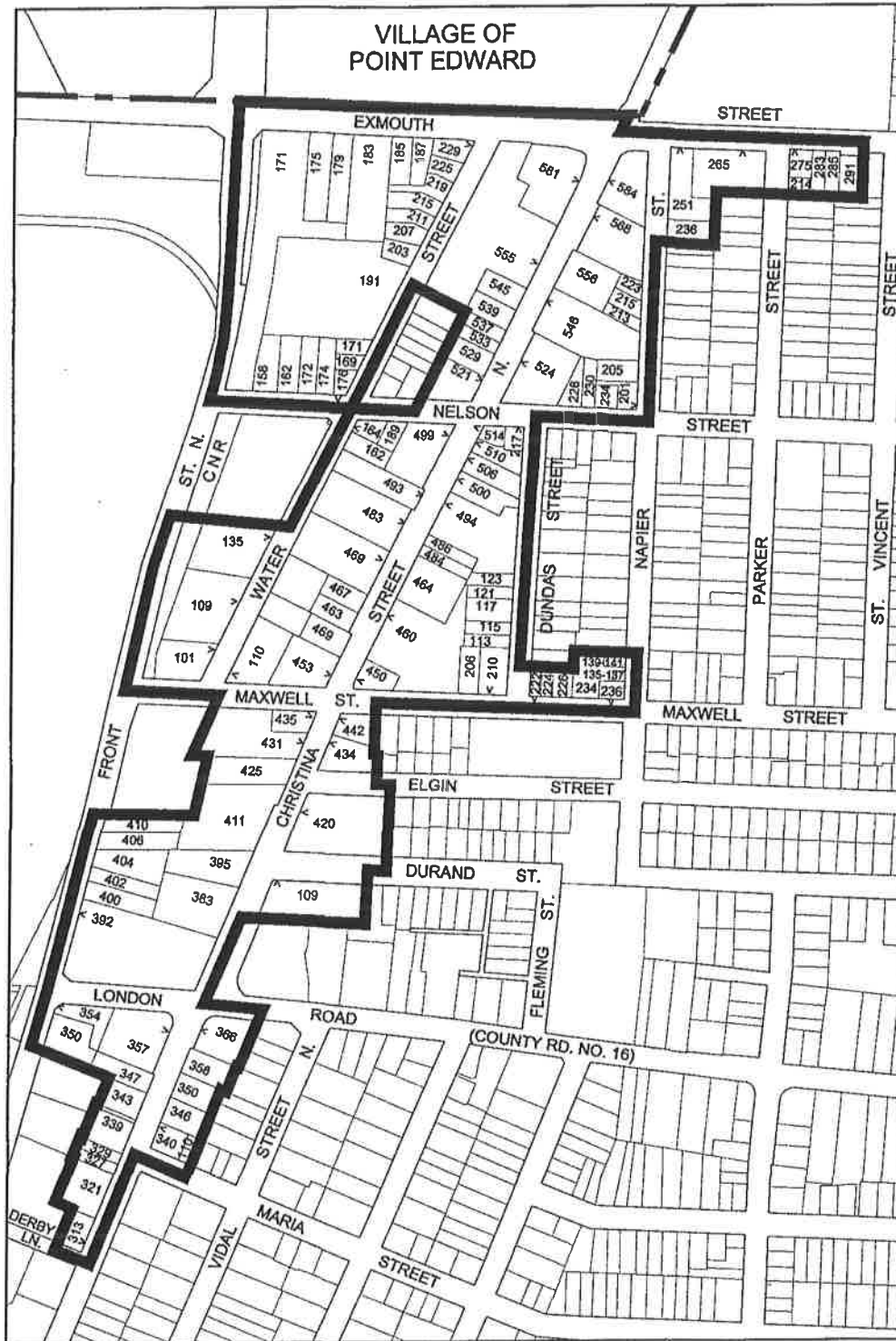
LIMIT OF COMMERCIAL AREA

PREPARED BY: CITY OF SARNIA PLANNING & BUILDING DEPARTMENT
DATED JANUARY 19, 2006.
SOURCE: ASSESSMENT MAPS
UPDATED FROM 2004 ASSESSMENT RECORDS.



NOT TO SCALE

SCHEDULE "A-2"



LIMIT OF COMMERCIAL AREA

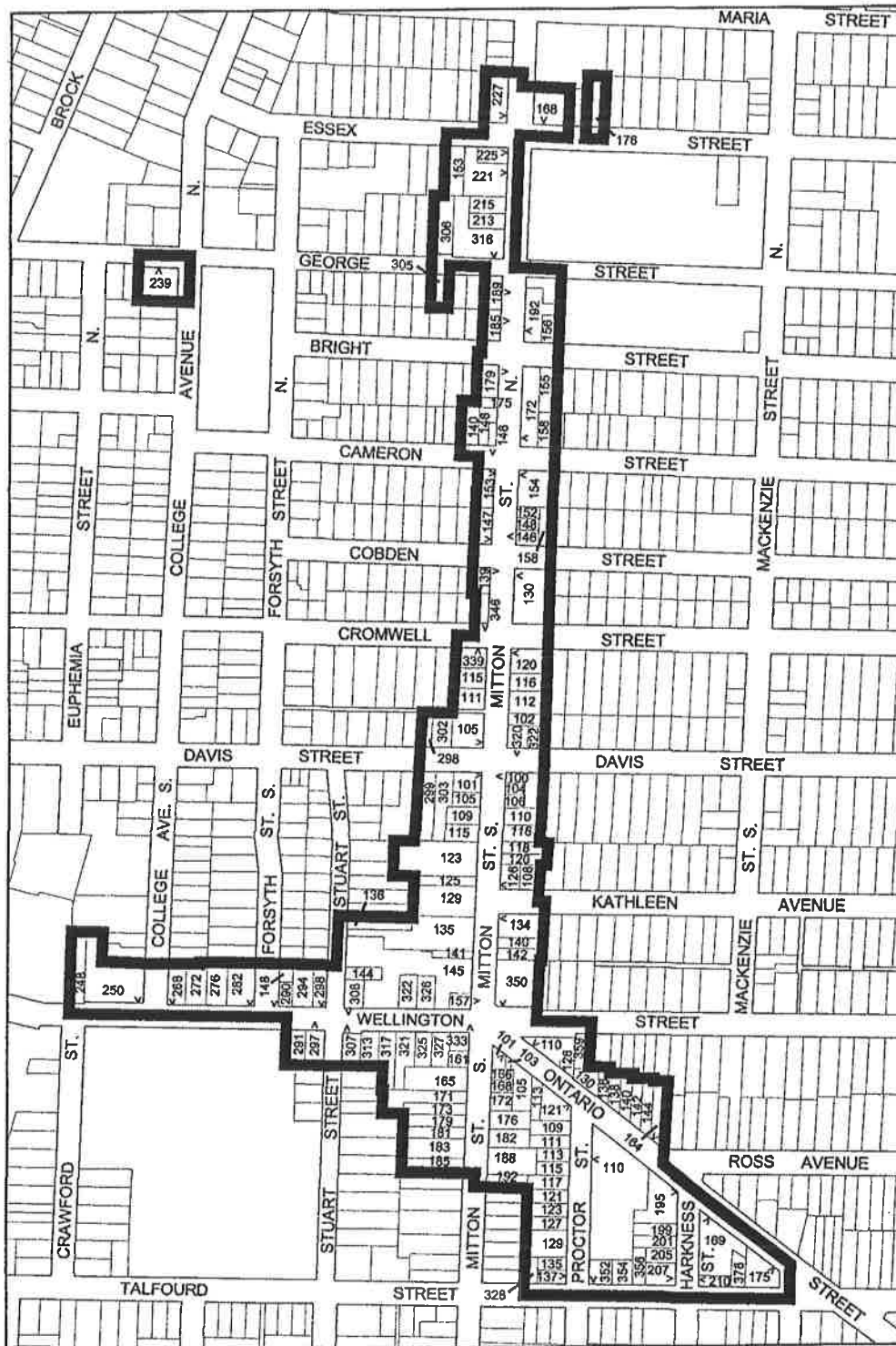
PREPARED BY: CITY OF SARNIA PLANNING & BUILDING DEPARTMENT
DATED JANUARY 19, 2006.

SOURCE: ASSESSMENT MAPS
UPDATED FROM 2004 ASSESSMENT RECORDS.



NOT TO SCALE

SCHEDULE "A-3"



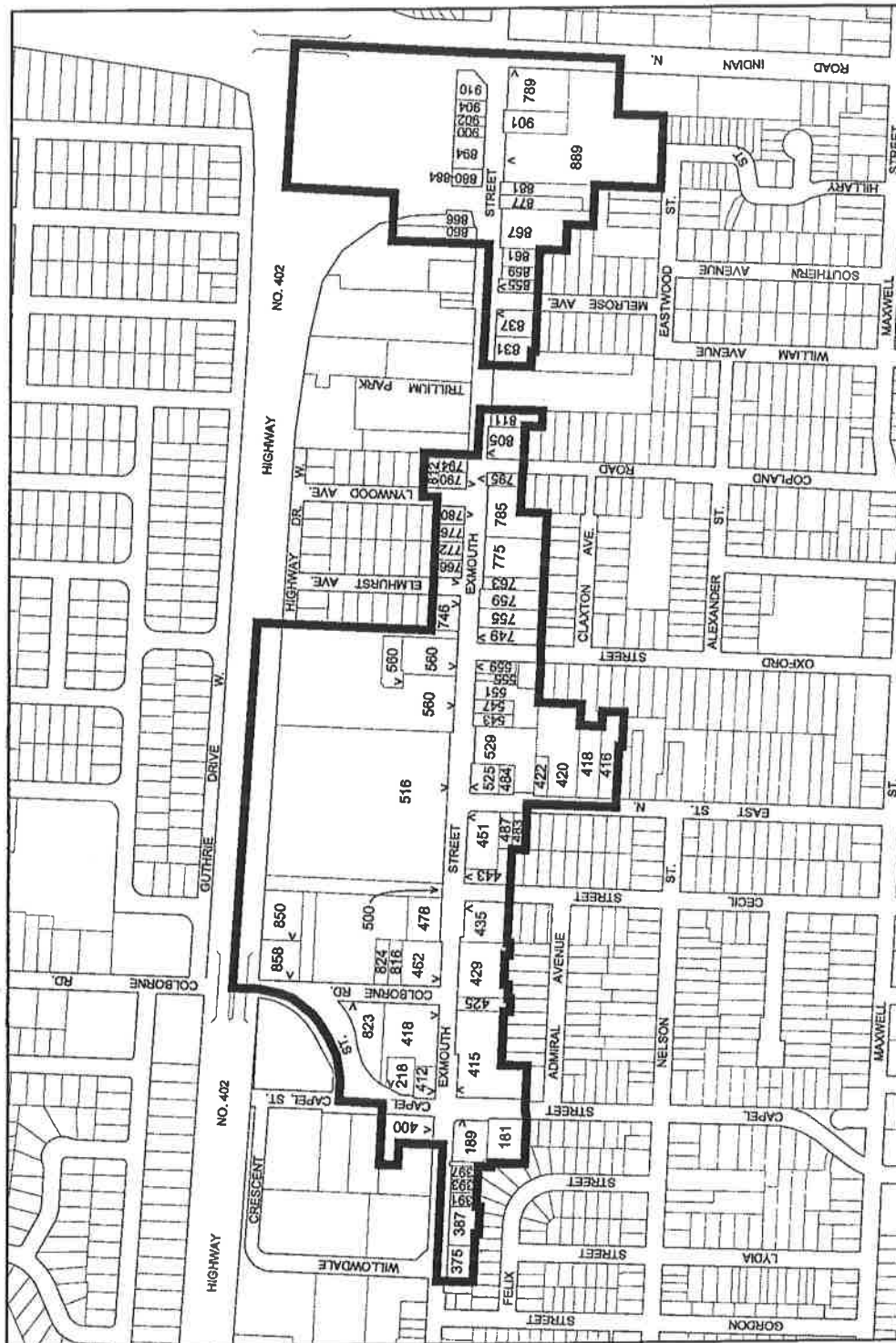
LIMIT OF COMMERCIAL AREA

PREPARED BY: CITY OF SARINIA PLANNING & BUILDING DEPARTMENT
 DATED JANUARY 19, 2006.
 SOURCE: ASSESSMENT MAPS
 UPDATED FROM 2004 ASSESSMENT RECORDS.



NOT TO SCALE

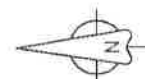
SCHEDULE "A-4"



LIMIT OF COMMERCIAL AREA

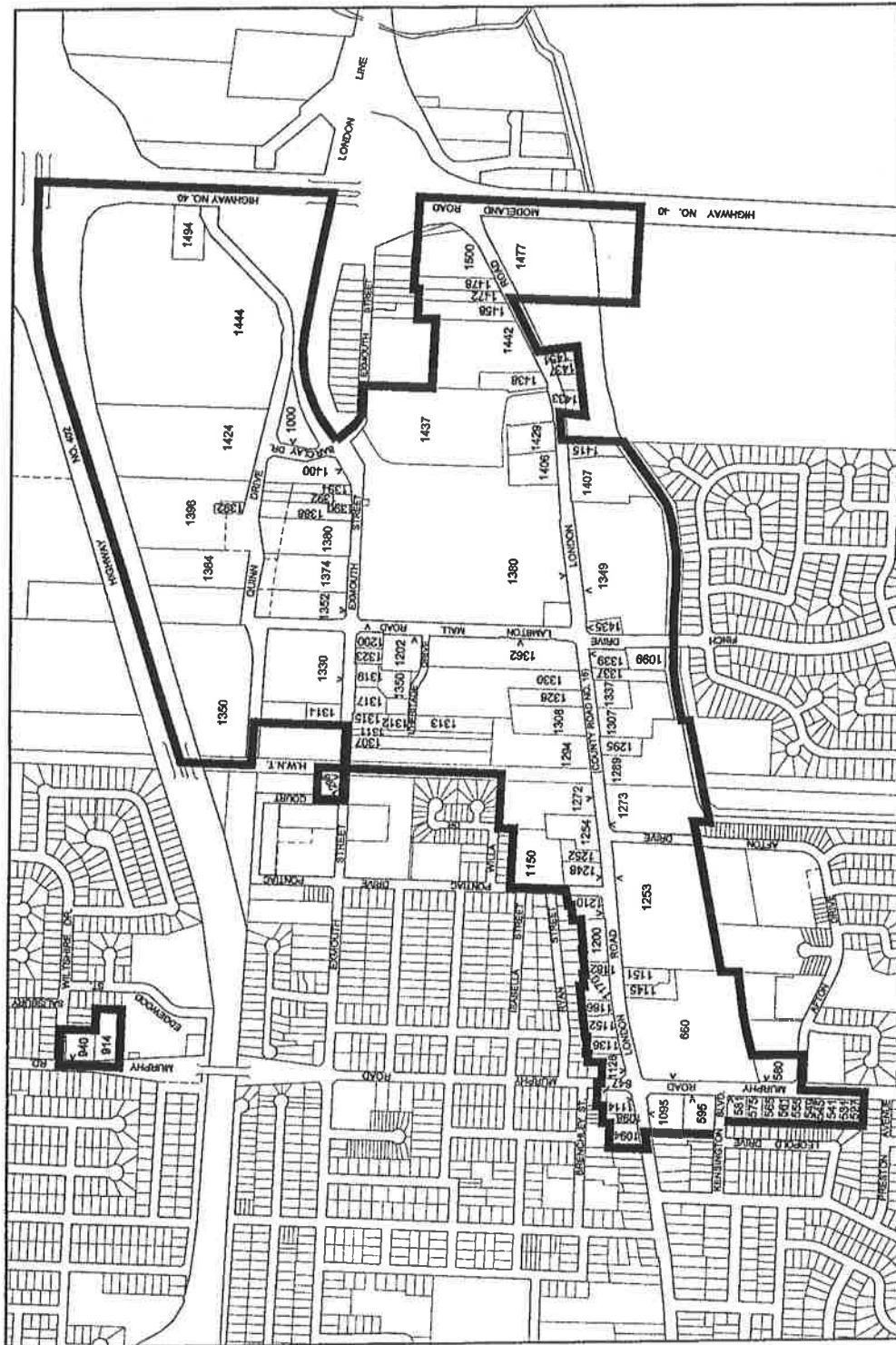
PREPARED BY: CITY OF SARNIA PLANNING & BUILDING DEPARTMENT
DATED JANUARY 19, 2006.

SOURCE: ASSESSMENT MAPS
UPDATED FROM 2004 ASSESSMENT RECORDS.



NOT TO SCALE

SCHEDULE "A-5"



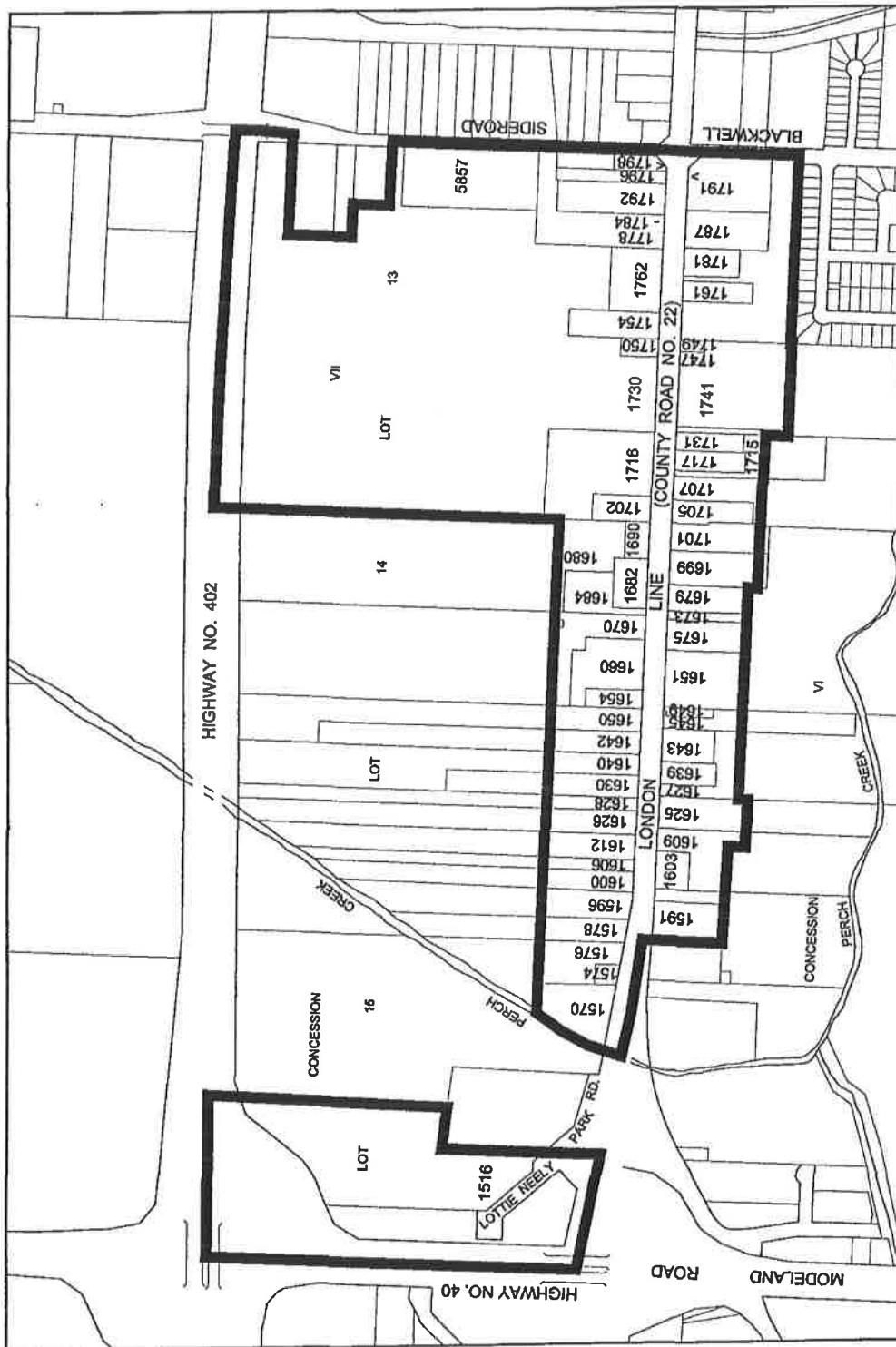
 LIMIT OF COMMERCIAL AREA

PREPARED BY: CITY OF SARINIA PLANNING & BUILDING DEPARTMENT
DATED JANUARY 19, 2006.
SOURCE: ASSESSMENT MAPS
UPDATED FROM 2004 ASSESSMENT RECORDS.



NOT TO SCALE

SCHEDULE "A-6"



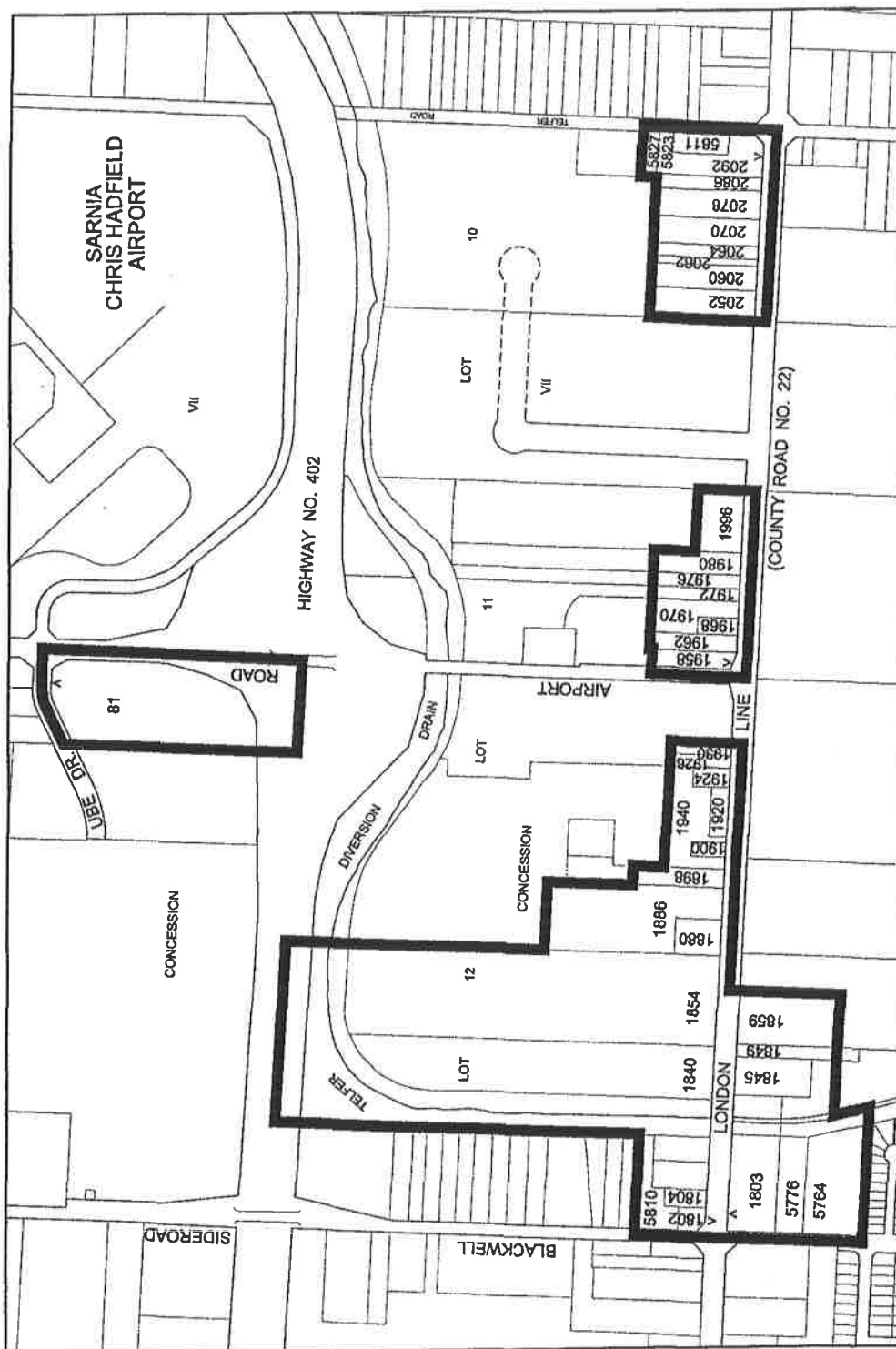
 LIMIT OF COMMERCIAL AREA

PREPARED BY: CITY OF SARNIA PLANNING & BUILDING DEPARTMENT
DATED JANUARY 19, 2006.
SOURCE: ASSESSMENT MAPS
UPDATED FROM 2004 ASSESSMENT RECORDS.



NOT TO SCALE

SCHEDULE "A-7"

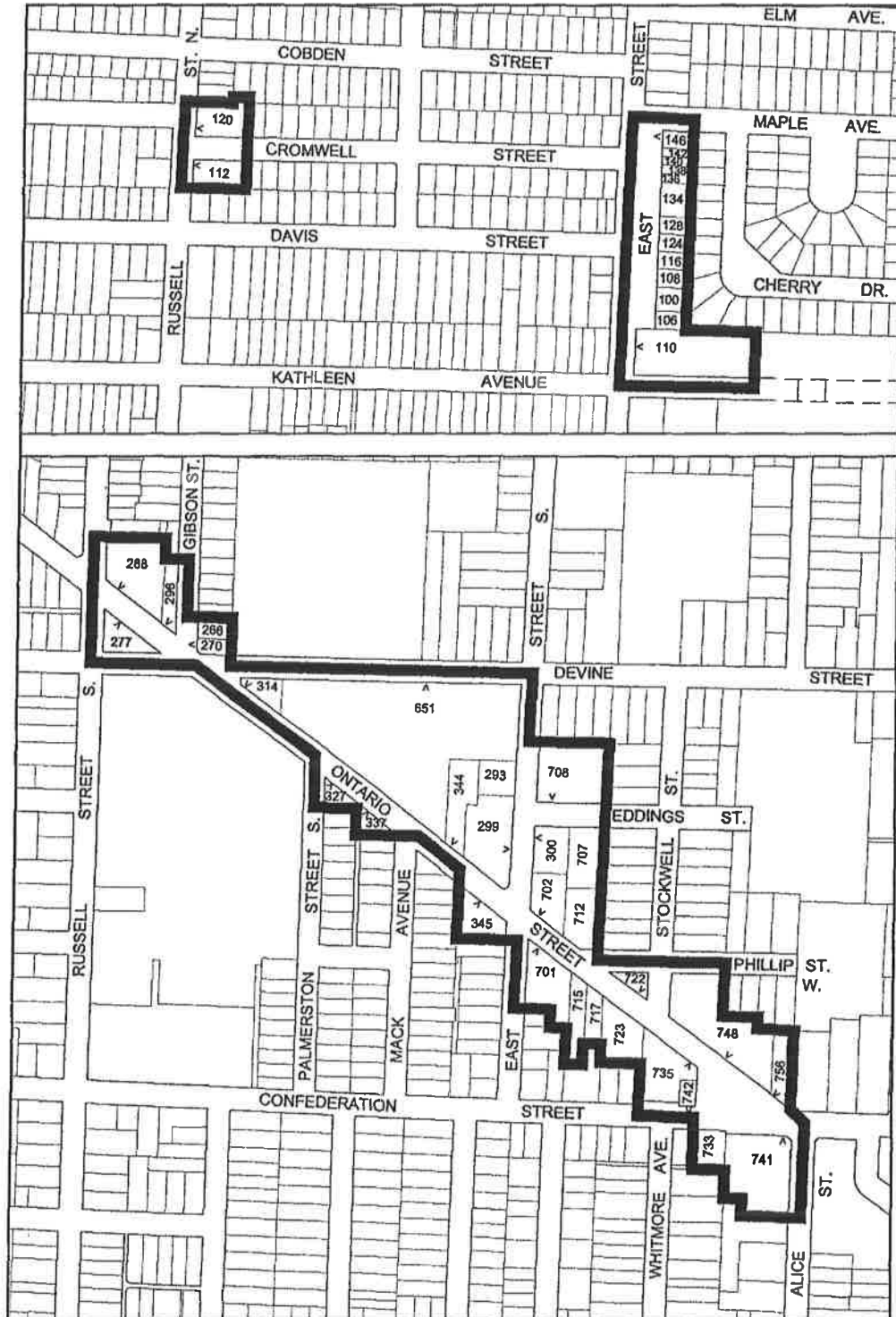


PREPARED BY: CITY OF SARNIA PLANNING & BUILDING DEPARTMENT
 DATED JANUARY 19, 2006.
 SOURCE: ASSESSMENT MAPS
 UPDATED FROM 2004 ASSESSMENT RECORDS.



NOT TO SCALE

SCHEDULE "A-8"



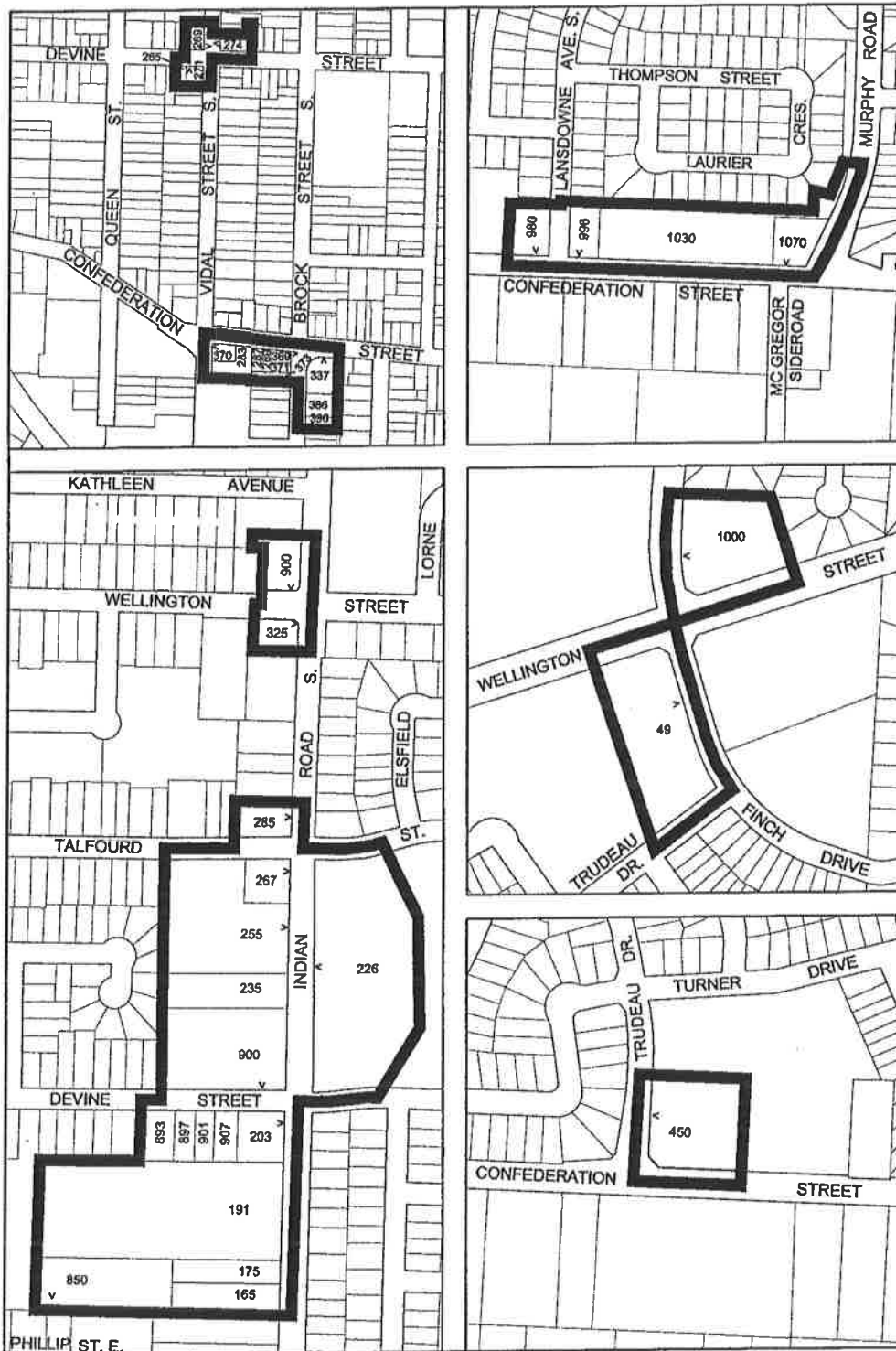
LIMIT OF COMMERCIAL AREA

PREPARED BY: CITY OF SARINIA PLANNING & BUILDING DEPARTMENT
DATED JANUARY 19, 2006.
SOURCE: ASSESSMENT MAPS
UPDATED FROM 2004 ASSESSMENT RECORDS.



NOT TO SCALE

SCHEDULE "A-9"



 LIMIT OF COMMERCIAL AREA

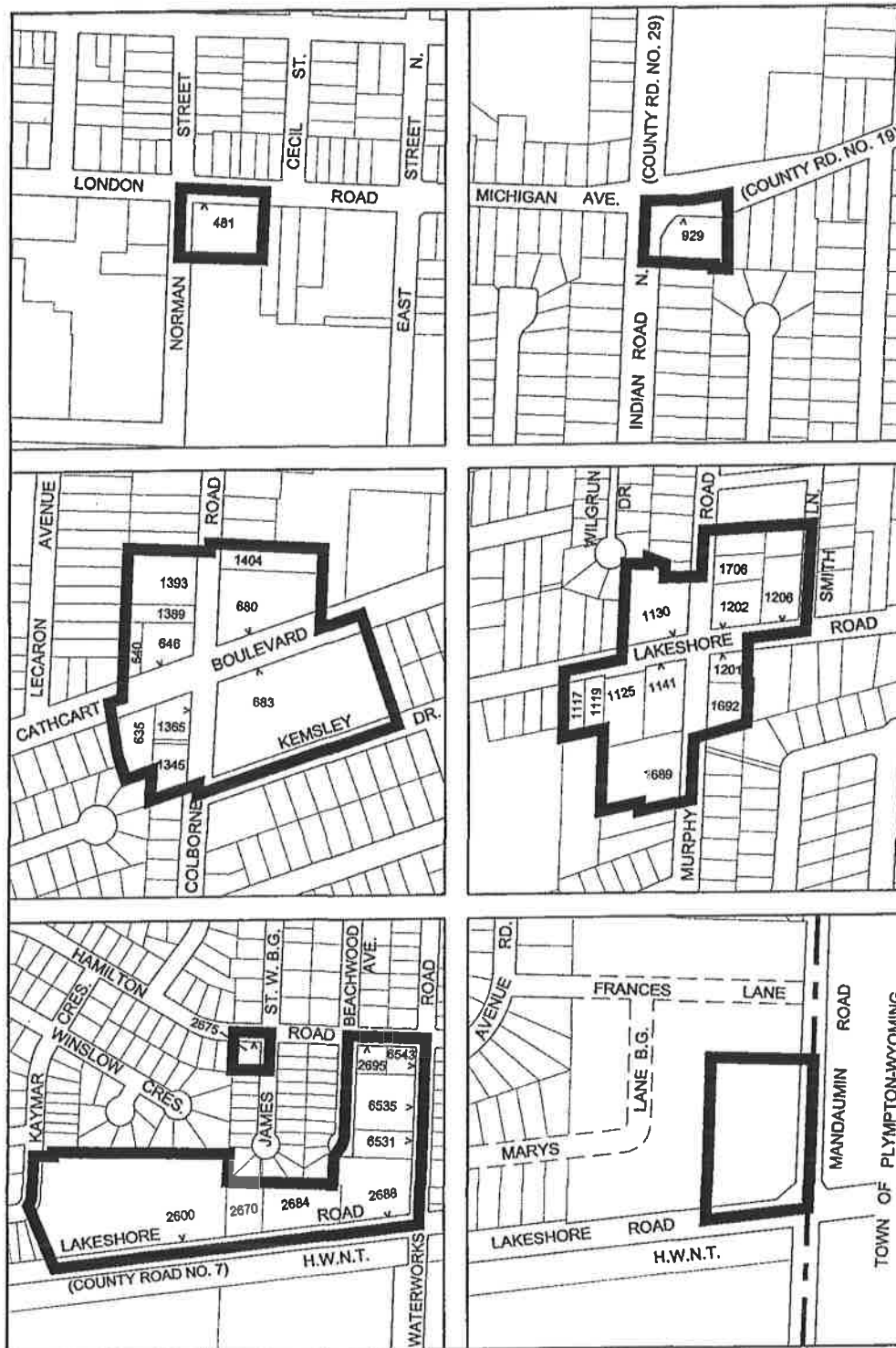
PREPARED BY: CITY OF SARNIA PLANNING & BUILDING DEPARTMENT
DATED JANUARY 19, 2006.

SOURCE: ASSESSMENT MAPS
UPDATED FROM 2004 ASSESSMENT RECORDS.



NOT TO SCALE

SCHEDULE "A-10"



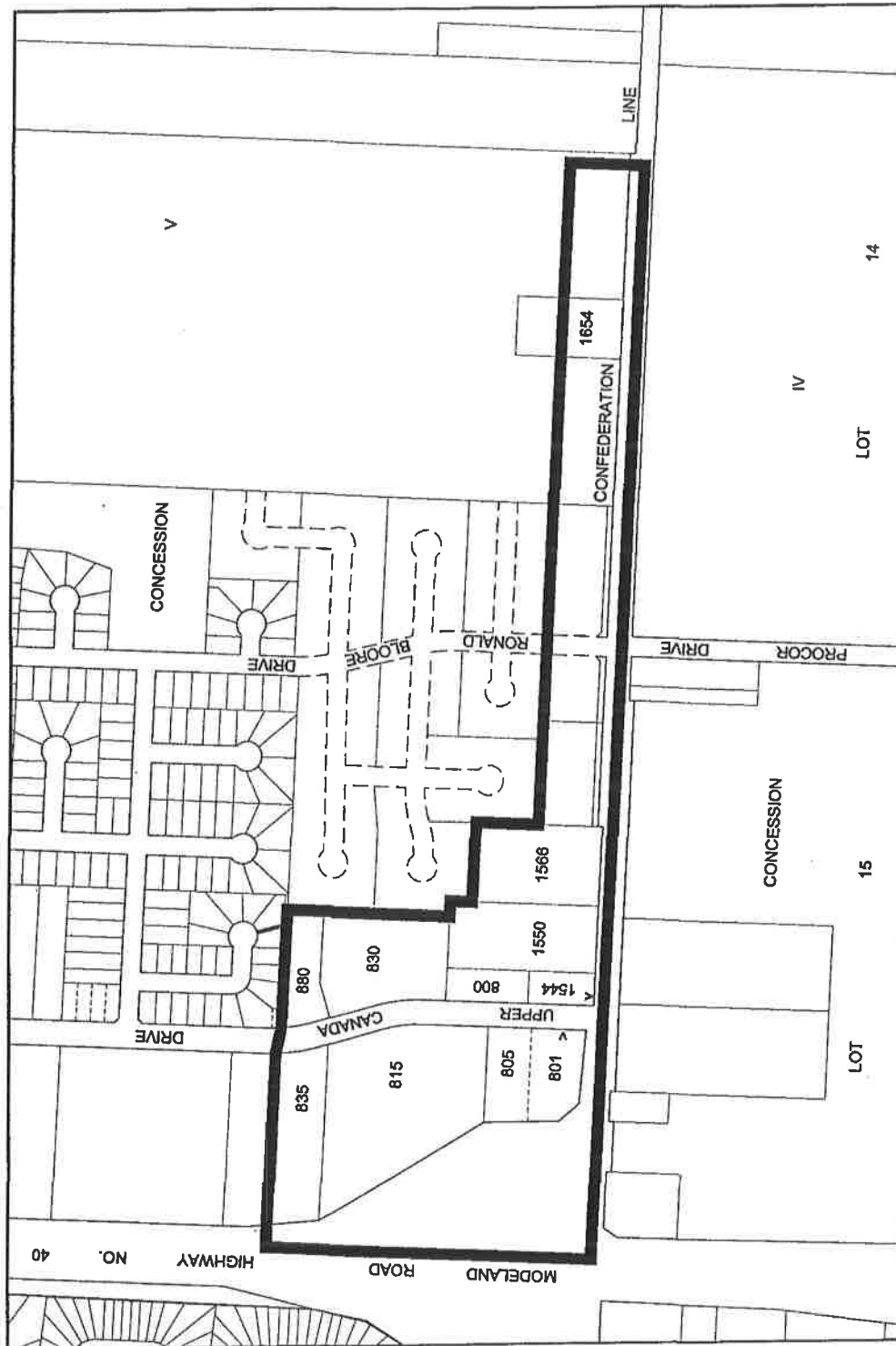
 LIMIT OF COMMERCIAL AREA

PREPARED BY: CITY OF SARNIA PLANNING & BUILDING DEPARTMENT
DATED JANUARY 19, 2006.
SOURCE: ASSESSMENT MAPS
UPDATED FROM 2004 ASSESSMENT RECORDS.



NOT TO SCALE

SCHEDULE "A-11"



LIMIT OF COMMERCIAL AREA

PREPARED BY: CITY OF SARNIA PLANNING & BUILDING DEPARTMENT
 DATED JANUARY 19, 2006.
 SOURCE: ASSESSMENT MAPS
 UPDATED FROM 2004 ASSESSMENT RECORDS.



NOT TO SCALE

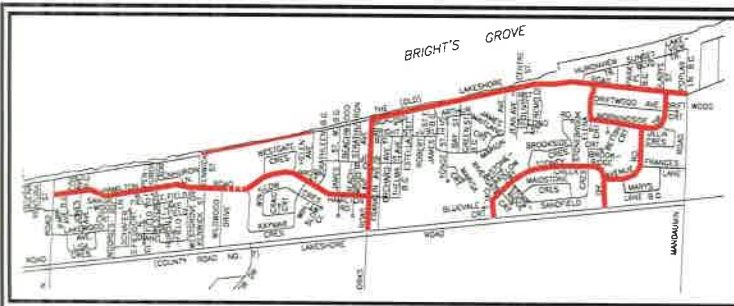
THE CORPORATION OF THE CITY OF SARNIA

SIDEWALK PLOWING ROUTE MAP

SCHEDULE A-12

ROUTE 1	33.162km
ROUTE 2	28.490km
ROUTE 3	36.145km
ROUTE 4	33.321 km
ROUTE 5	39.009 km
	168.177

**DASHED LINE INDICATES
SIDEWALK ON BOTH
SIDES OF ROAD**



BY-LAW 144 OF 2019