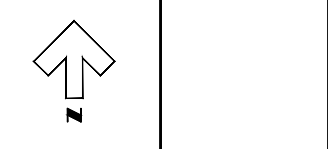


EXISTING DEVELOPMENT:	34 Street Townhomes 134 Single Detached Lots
PROPOSED PHASE 5A:	12 Street Townhomes 2 Apartment Buildings
PROPOSED PHASE 5B:	30 Street Townhomes
PROPOSED PHASE 5C:	73 Single Detached Lots
FUTURE PHASE 6A:	32 Townhome Condominiums
FUTURE PHASE 6B:	50 Townhome Condominiums
FUTURE PHASE 7:	38 Single Detached Lots 18 Townhome Condominiums
TOTAL DEVELOPMENT:	421 Dwelling Units 2 Apartment Buildings

**LEGEND**

SAN. or STM.	EXISTING SEWERS, SANITARY or STORM
SDPM	PROPOSED STORM SEWERS
SANITARY	PROPOSED SANITARY SEWERS
M.H. OR C.B.	EXISTING MANHOLE and CATCH-BASIN
M.H. OR C.B.	PROPOSED MANHOLE and CATCH-BASIN
---	EXISTING WATERMAIN
---	PROPOSED WATERMAIN
H.W.V.	HYDRANT AND WATER VALVE
U.P.	UTILITY POLES
GA	GAZING
---	FUTURE CONC. DRIVES (BY OTHERS)
---	PROPOSED CONC. SIDEWALK

1:750



**NOTE**  
The locations of existing underground utilities are shown in an approximate way only and have not been independently verified by the owner or its representative. The contractor shall determine the exact location of all existing utilities before commencing work and agrees to be fully responsible for any damages which might be occasioned by the contractor's failure to exactly locate and preserve any and all underground utilities.

**BENCHMARK INFORMATION**

**BENCHMARK INFORMATION**

Design By: B.K.      Checked By: G.C.B.

No.	DATE	REVISION
1	3/20	For Review
2	5/20	For City Review



1263339 Ontario Ltd.

**Rapids Parkway  
Development - Phase 5  
Sarnia ON**

Overall Road and Phasing Layout

Scale (24x36) 1:1500	Project No. 17304  Drawing No. 1 of 5
-------------------------	---