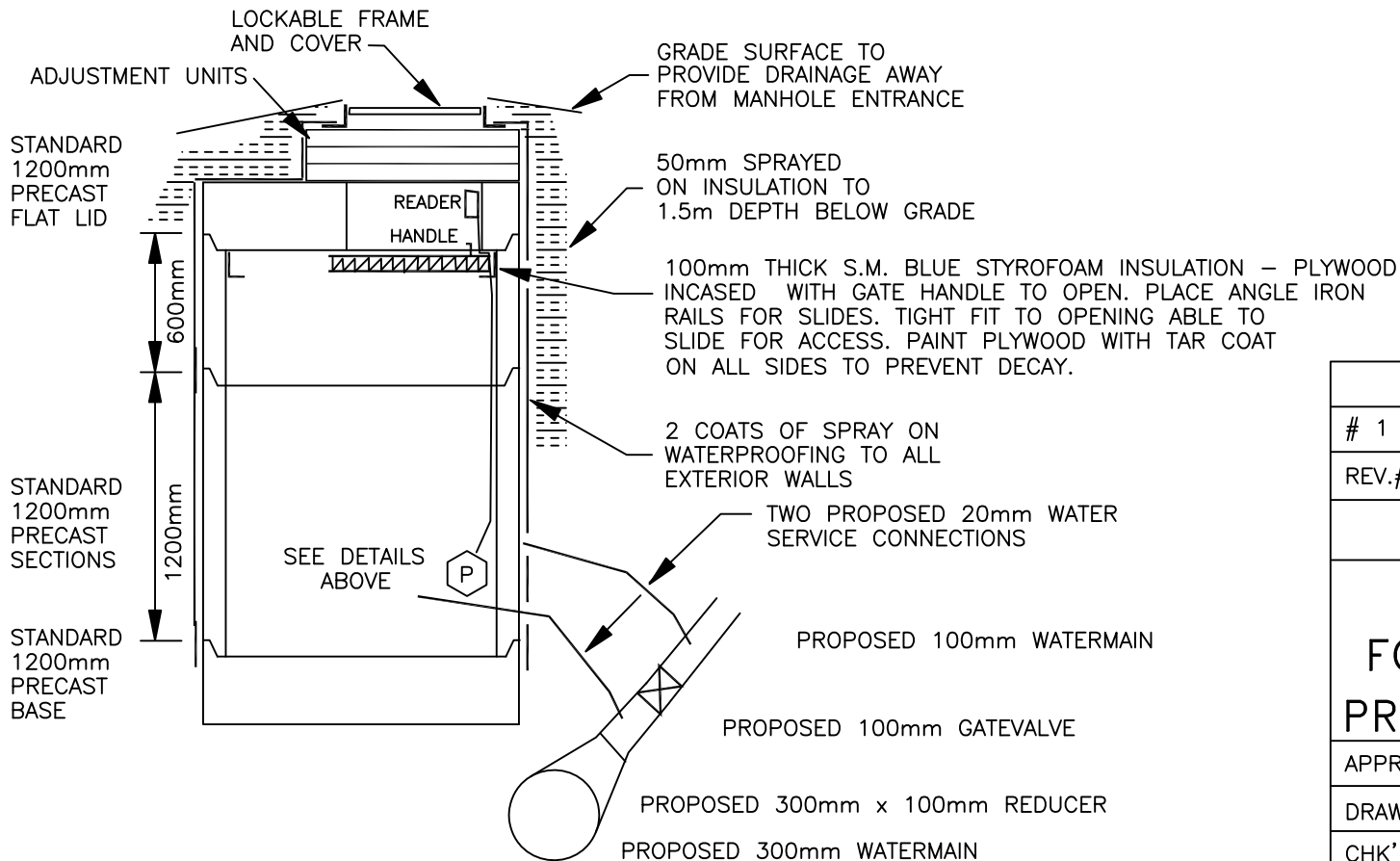


**NOTE :**  
 PROPOSED WATER METER  
 TO BE WIRED TO REMOTE  
 READER FASTENED TO THE  
 MANHOLE OPENING. MUST  
 BE READABLE FROM GROUND  
 LEVEL BY REMOVING MANHOLE  
 LID.



# 1	GENERAL REVISIONS	12/00	
REV.#	DESCRIPTION	DATE	AP.BY
<b>CITY OF SARNIA</b>			
<b>WATERMAIN CHAMBER FOR WATER METERS ON PRESSURE VARYING MAINS</b>			
APPROVED BY:			BK.
DRAWN BY: J.Roberts	SCALE: N.T.S.	DWG.No.	
CHK' BY:	DATE:11/2000	<b>101-SF</b>	