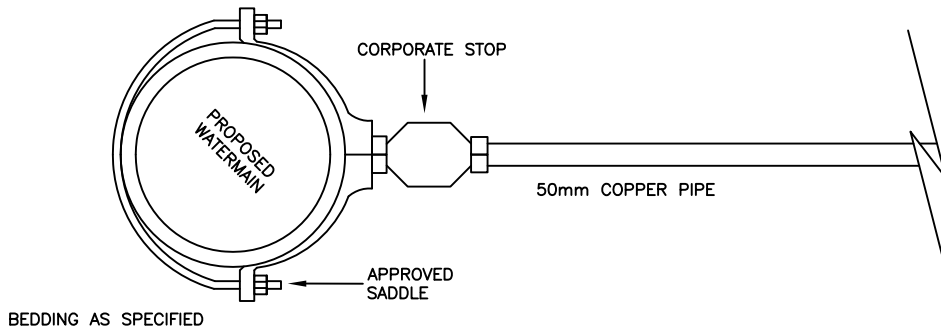


**NOTES:**

1) BLOW-OFFS WILL BE FURNISHED WITH A 50mm MJ INLET, A NON-TURNING OPERATING ROD AND SHALL OPEN TO THE LEFT. ALL OF THE WORKING PARTS SHALL BE OF BRONZE-TO-BRONZE DESIGN, AND BE SERVICEABLE FROM ABOVE GRADE WITH NO DIGGING. UNITS SHALL OPERATE WITH A STANDARD 2" GATE VALVE WRENCH. WHEN OPEN, VALVE SHALL BE 100% UNOBSTRUCTED AND DRAIN HOLE SHALL BE COVERED. THE OUTLET SHALL BE 2" FIP WITH PLUG AND EXTEND A MINIMUM OF 600mm " ABOVE THE GROUND, AS MANUFACTURED BY KUPFERLE FOUNDRY CO., ST. LOUIS, MO. MODEL #77, OR APPROVED EQUAL.

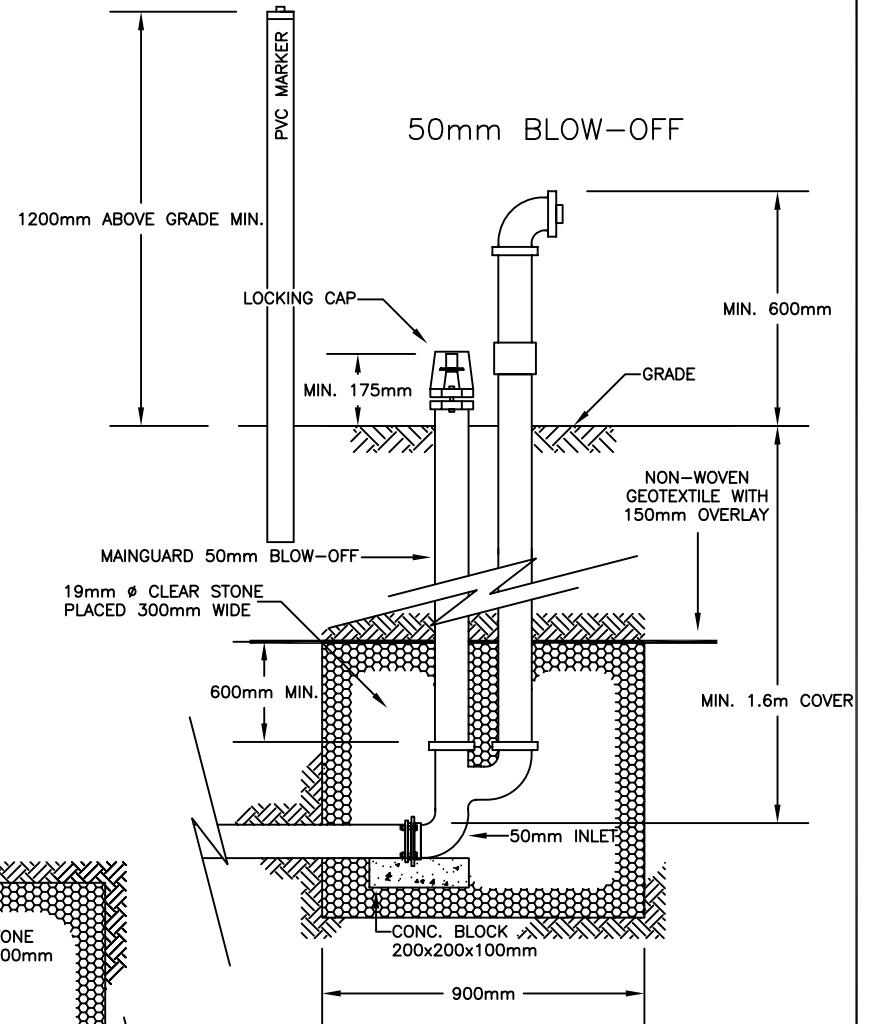
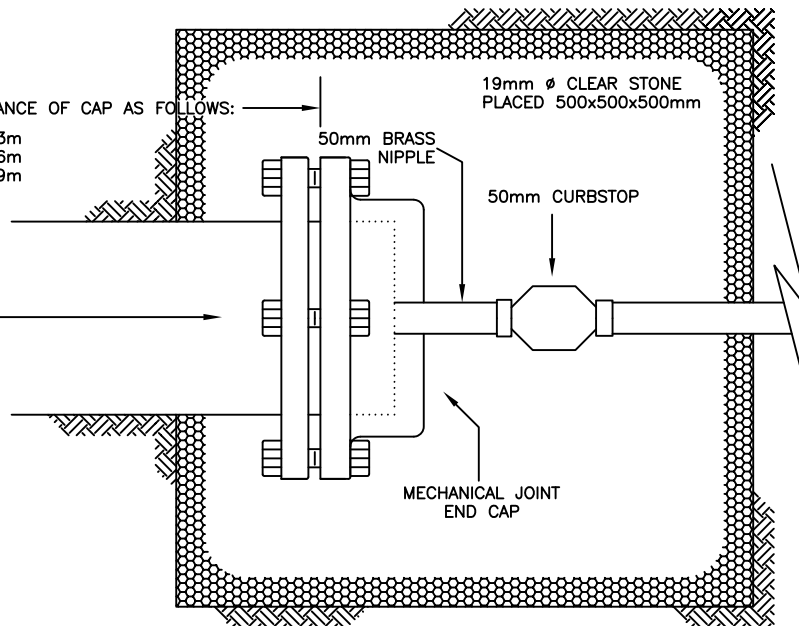
2) CONTRACTOR TO CONTACT SARNIA PUBLIC WORKS TO PLACE LOCK DURING WATERMAIN COMMISSIONING



ALL JOINTS SHALL BE RESTRAINED WITHIN DISTANCE OF CAP AS FOLLOWS:

- 200mm Ø PIPE, 13m
- 250mm Ø PIPE, 16m
- 300mm Ø PIPE, 19m

TEMPORARY DEAD END CAP AS PER CITY OF SARNIA STANDARDS, SECTION 3, C-11



1	REVISED FOR 2016 SPEC.	JAN/16	
REV.#	DESCRIPTION	DATE	APP.BY
<b>CITY OF SARNIA</b>			
<b>TYPICAL 50mm WATERMAIN BLOWOFF (MAINGUARD HYDRANT)</b>			
APPROVED BY:		BK.	
DRAWN BY: C.H.	SCALE: N.T.S.	DWG.No.	
CHK' BY:	DATE: 02/08	<b>106-SF</b>	