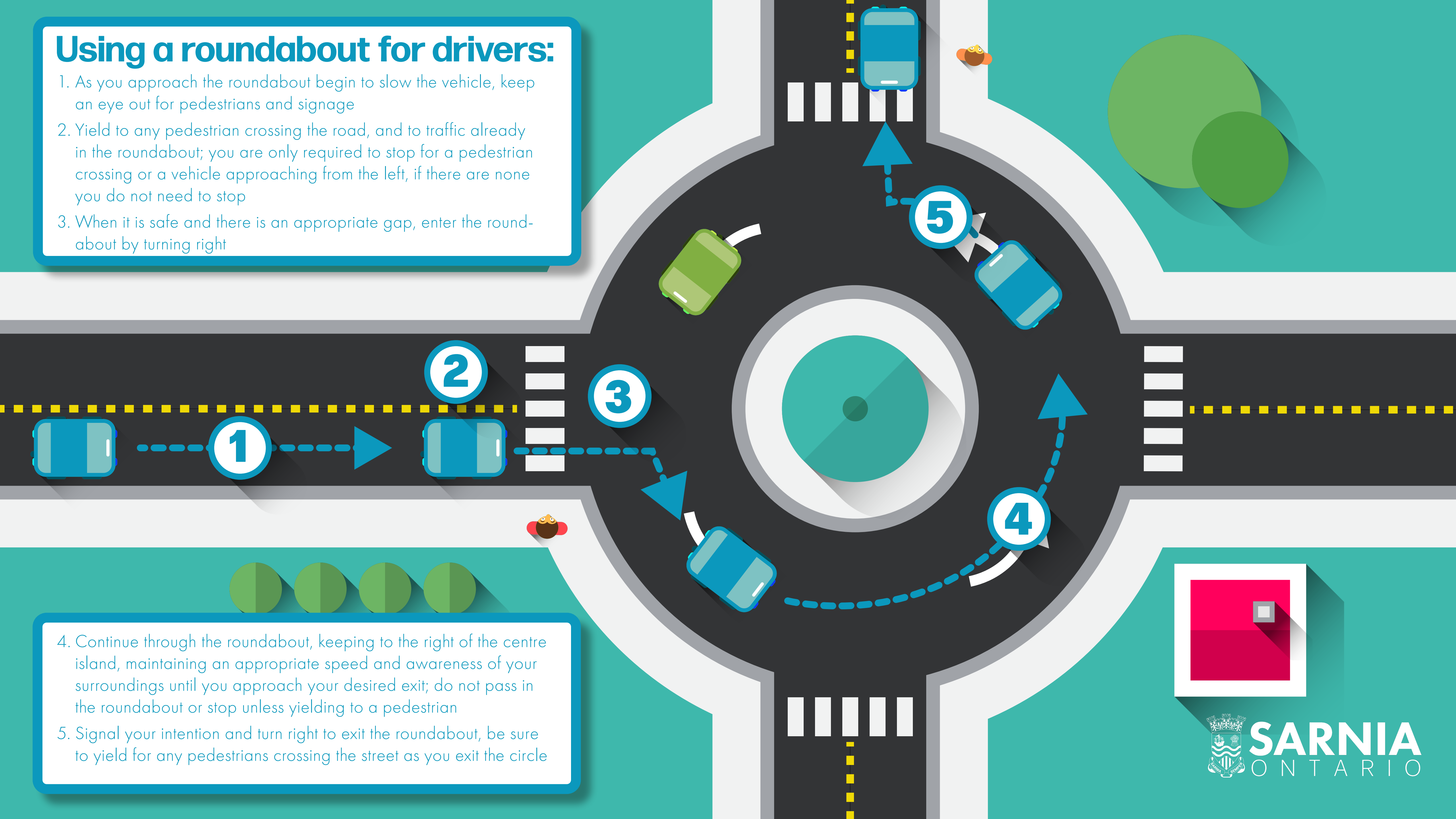
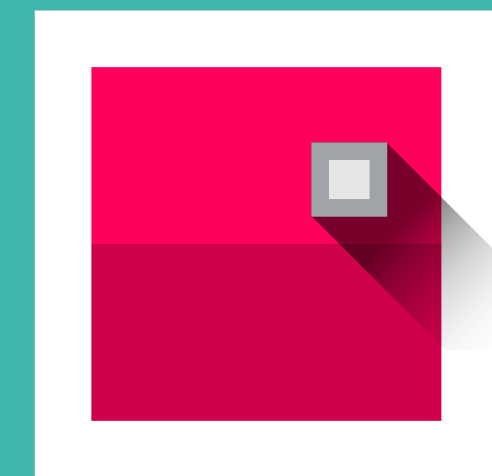


Using a roundabout for drivers:

1. As you approach the roundabout begin to slow the vehicle, keep an eye out for pedestrians and signage
2. Yield to any pedestrian crossing the road, and to traffic already in the roundabout; you are only required to stop for a pedestrian crossing or a vehicle approaching from the left, if there are none you do not need to stop
3. When it is safe and there is an appropriate gap, enter the roundabout by turning right



4. Continue through the roundabout, keeping to the right of the centre island, maintaining an appropriate speed and awareness of your surroundings until you approach your desired exit; do not pass in the roundabout or stop unless yielding to a pedestrian
5. Signal your intention and turn right to exit the roundabout, be sure to yield for any pedestrians crossing the street as you exit the circle



SARNIA
ONTARIO